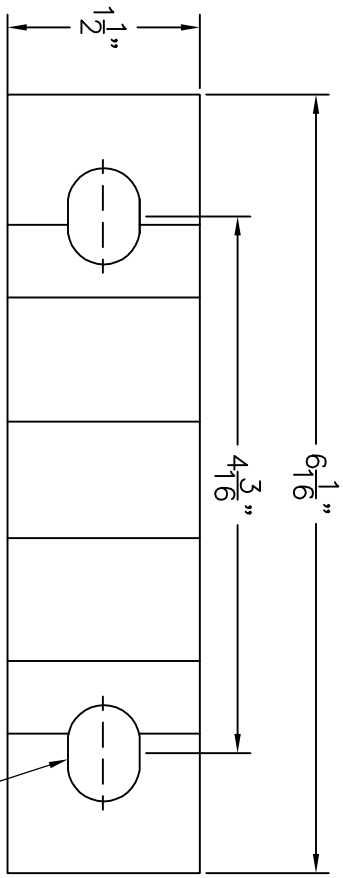
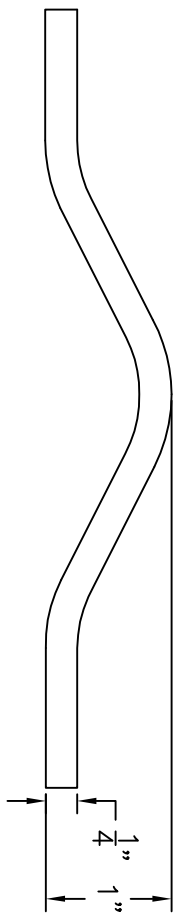
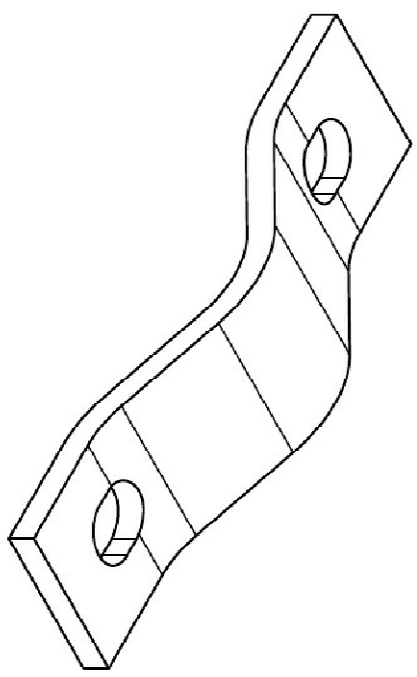


PARTS LIST						
ITEM	QTY	PART NO.	PART DESCRIPTION	LENGTH	UNIT WT.	NET WT.
1	1	ACP	CLAMP HALF		0.65	0.65



9/16"Ø x 3/4" SLOT  
(2 PLACES)



FINISH:  
HOT DIP GALVANIZED

**TOLERANCE UNITS**

TOLERANCES ON DIMENSIONS, UNLESS OTHERWISE NOTED ARE:  
 SAWED, SHEARED AND GAS CUT HOLES (± .030")  
 DRILLED AND GAS CUT HOLES (± .030")—NO CONING OF HOLES  
 LASER CUT EDGES AND HOLES (± .010")  
 BENDS ARE ± 1/2 DEGREE  
 ALL OTHER MACHINING (± .030")  
 ALL OTHER ASSEMBLY (± .060")

**PROPRIETARY NOTE:**

THE DATA AND TECHNIQUES CONTAINED IN THIS DRAWING ARE PROPRIETARY INFORMATION OF IZZY INDUSTRIES AND CONSIDERED TRADE SECRET. ANY USE OR DISCLOSURE WITHOUT THE CONSENT OF IZZY INDUSTRIES IS STRICTLY PROHIBITED.

PART NO. ACP

**DESCRIPTION**

CLAMP HALF 1/4" THICK , 6-1/16" LONG

**DRAWN BY:**

NMB

**CHECKED BY:**



DATE:  
10.24.14

701 Riverwood Drive  
Pembroke, NH 03275  
925.344.5970

**REVISION:**

SCALE:

SHEET:

1 OF 1