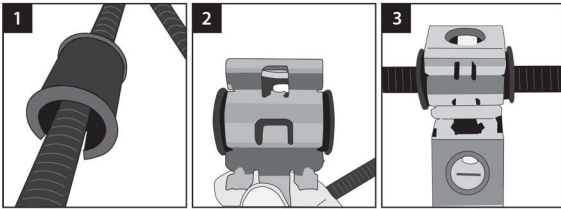


PART NUMBER: SSHA-158-12-4  
1-5/8" Heavy Duty Insert with 4  
1/2" holes

## Specifications

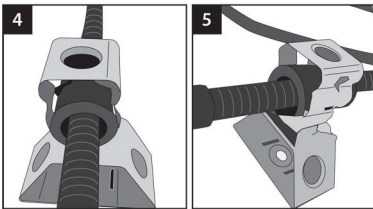
EPDM Rubber Grommet  
UV resistant  
Heavy duty design for fiber, power, elliptical, and coaxial cables



**Step 1:**  
Place the grommet over the cable. Make sure that the grommet fits snugly over the cable. It is ok if the grommet does not close fully around the cable. This is to be expected and allows for greater cable retention on the tower or cell site.

**Step 2:**  
Place the snap in or stackable over the grommet. Be sure that the top and bottom tabs are equidistant from the outside edges of the snap in.

**Step 3:**  
Attach the snap in to a 3 way, stand off or angle adapter with the proper hole configuration. Follow snap in or cable manufacturer guidelines on maximum stacks per run.



**Step 4:**  
Care should be taken not to exceed the maximum diameter the snap in or grommet can hold. Doing so can cause damage to the cable and void all warranties.

**Step 5:**  
Care should be taken not to put a cable in the grommet that is undersized or under the specified minimum diameter as the cable will slip and cause damage or injury voiding all warranties.