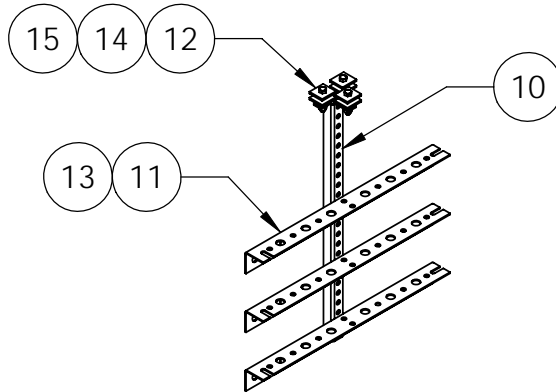
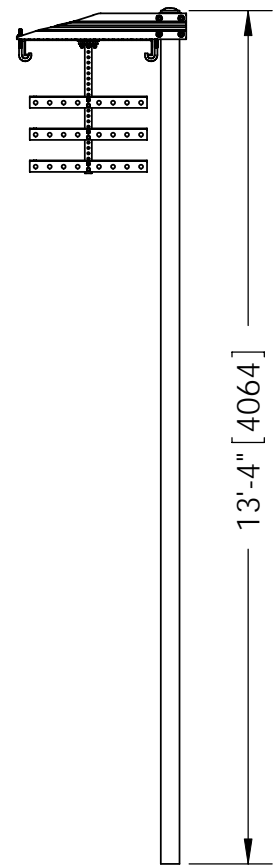
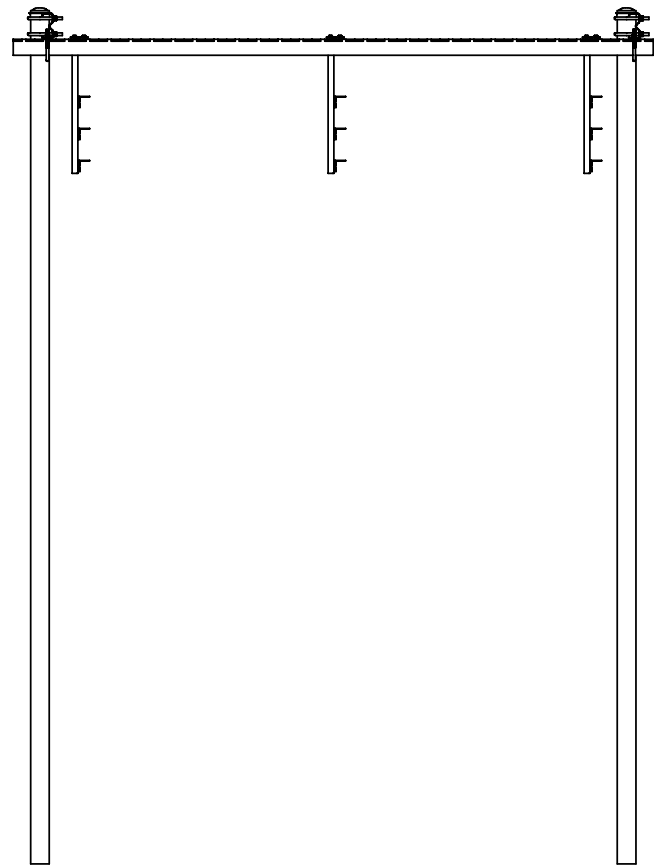
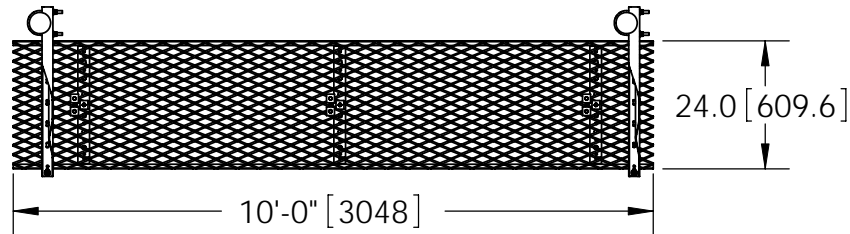
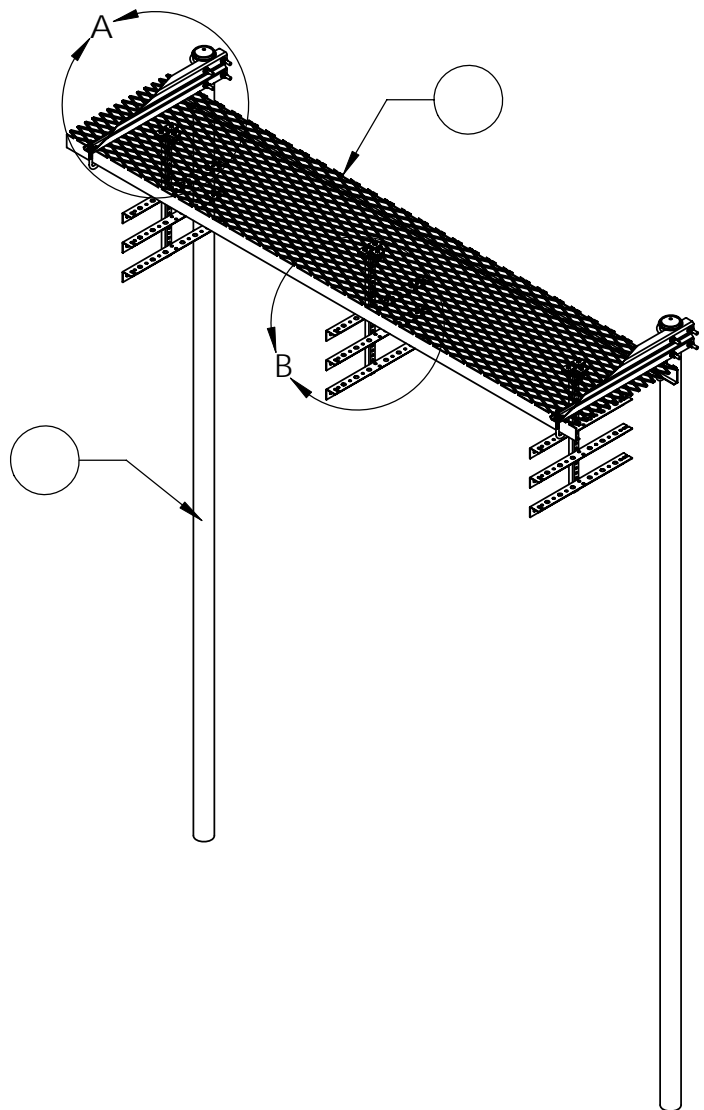
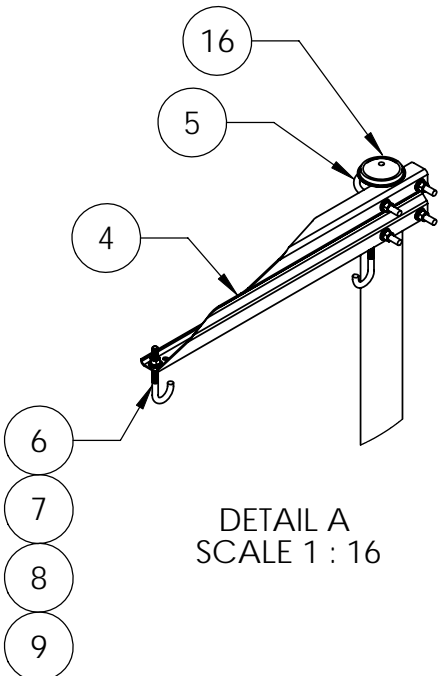


ITEM	PART NO.	DESCRIPTION	QTY.	WEIGHT
1		∅		
2				
3	WBK210BHK	HARDWARE KIT (ITEMS 4-16)		
4	WBLB243.08	24" WAVEGUIDE BRIDGE SUPPORT BRACKET	2	7.14 LBS
5	GUB-4356	1/2" X 3-5/8" X 6" GALV U-BOLT KIT	4	0.83 LBS
6	WBJB6	1/2" J-BOLT	4	0.41 LBS
7	GWF-04	1/2" GALV FLAT WASHER	4	0.01 LBS
8	GWL-04	1/2" GALV LOCK WASHER	4	0.01 LBS
9	GN-04	1/2" GALV HEX NUT	4	0.04 LBS
10	WBT243.01	VERTICAL TRAPEZE SECTION	3	2.53 LBS
11	WBT243.02	HORIZONTAL TRAPEZE SECTION	9	2.81 LBS
12	MT-387	SQUARE WASHER, 1-1/2" X 1-5/8" W/ 7/16" HOLE	18	0.12 LBS
13	GB-03105	3/8" X 1" GALV BOLT KIT	18	0.04 LBS
14	GB-03205	3/8" X 2" GALV BOLT KIT	9	0.04 LBS
15	GWF-03	3/8" GALV FLAT WASHER	9	0.01 LBS
16	PC-034	∅ 3 1/2" PIPE CAP	2	0.28 LBS

REVISIONS				



NOTES:
1. ALL METRIC DIMENSIONS ARE IN BRACKETS.

These drawings and specifications are proprietary property and may be used only for the specific purpose authorized in writing. ALL DIMENSIONS ARE IN INCHES U.O.S. TOLERANCES UNLESS OTHERWISE SPECIFIED: .X = ± .12 ANGLES ±2° .XX = ± .06 FRACTIONS ±1/32 .XXX = ± .030 REMOVE BURRS AND BREAK EDGES .005 DO NOT SCALE THIS PRINT	DRAWN BY: ACG	SHEET: 1 of 1	PART NUMBER: WGBK2-HK
	CHECKED BY: TP	SCALE: NTS	DESCRIPTION: WAVEGUIDE BRIDGE KIT
	DATE: 01/29/08	MATERIAL: A36, A53, A568	DRAWING TYPE: ASSEMBLY DRAWING
	REVISION: F	FINISH: GALV A123	WEIGHT: ~70lbs